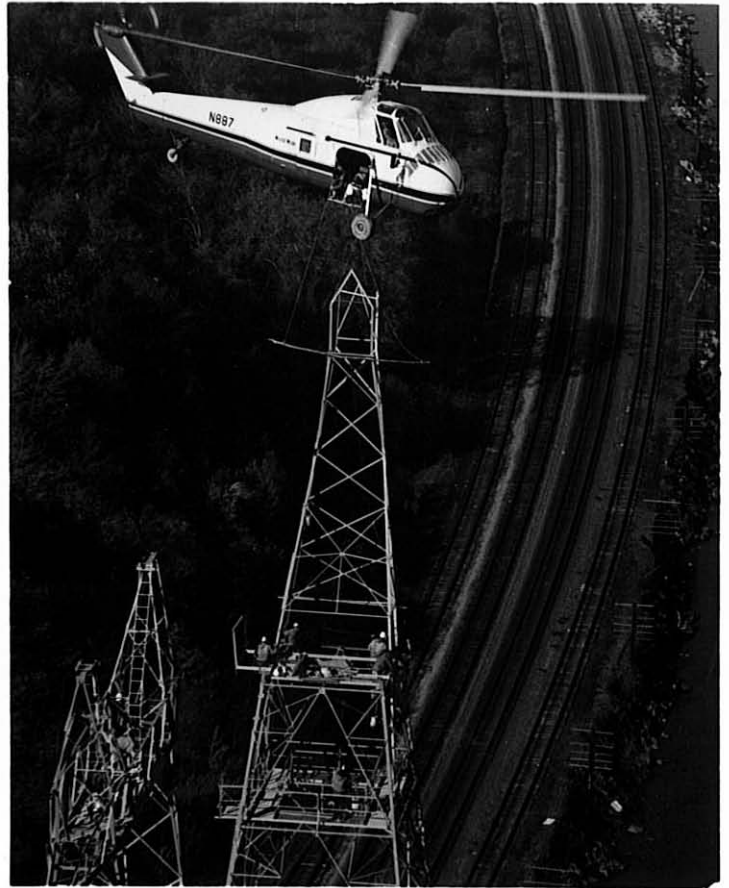


#5





FOR IMMEDIATE RELEASE

The helicopter can be used in virtually all phases of light and heavy construction work, both at sea and ashore.

Shown, top left, clockwise: Accurate placement of emergency machinery... rapid erection of the tallest of structures... placement of heavy production components with a minimum of equipment and personnel... and... inexpensive installation of building fixtures.

See other two photos in this kit for examples of the helicopter being used in important cargo moving and rescue operations.

(Breeze Corporations, Inc., 700 Liberty Ave., Union, N. J. -- 201-MU 6-4000 --
Contact: J. J. Mascuch, President)

- 30 -
5/22/68

From: J. L. Sicari
Public Relations Counselor
370 Lexington Avenue
New York, N. Y. 10017
212-LE 2-6227
(Contact: Sicari)